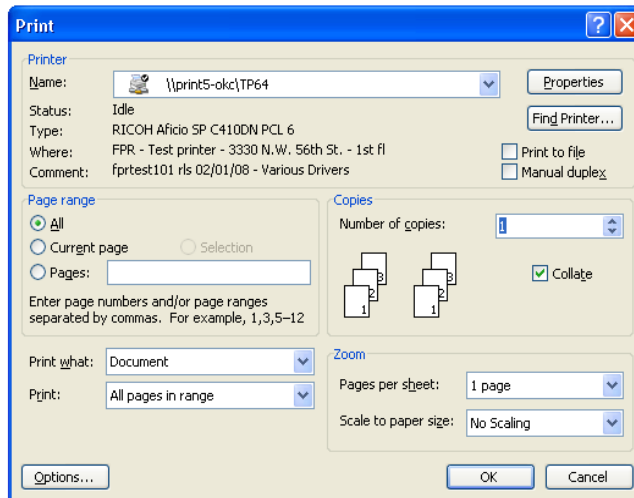
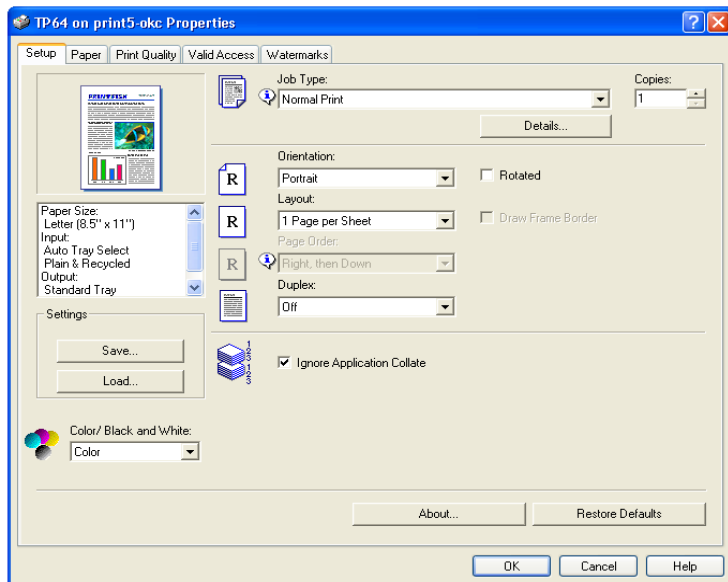


Changing Prints from B/W to Color on a RICOH Color Printer (C410dn & C420dn)

1. Select print from “File”, and select properties

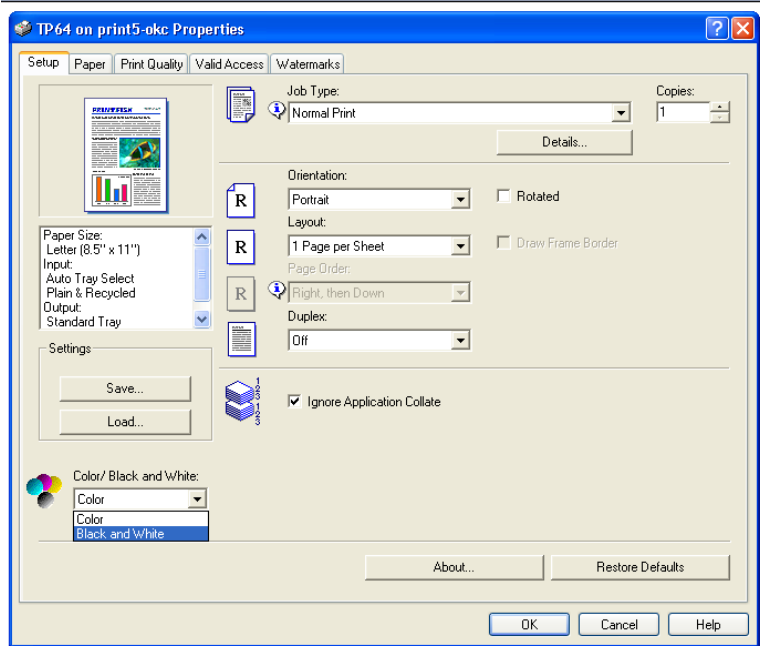


- a.
2. Select “Setup” tab from top menu



a.

3. Under the “Color / B/W ” drop down menu you can select B/W or Color



- a.
4. Select “ok” and it will save changes for this print job.
5. If color prints are needed you will have to change this option each time you print from this device.